

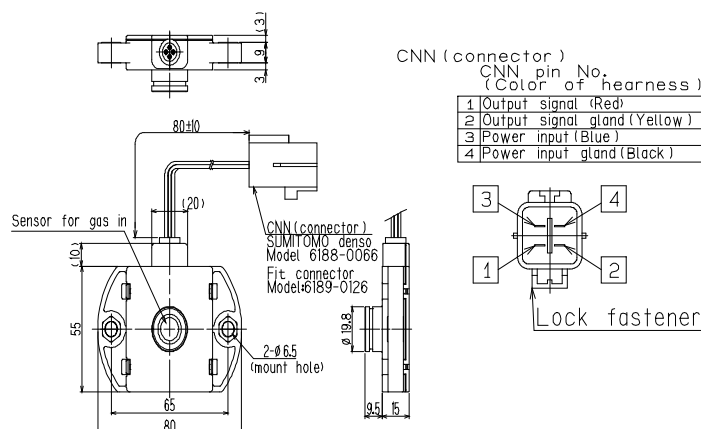


Hydrogen Safety Sensor for Fuel Cell

Model FSD-753 / FHD-752



External drawing



Specifications

	FSD-753	FHD-752
Functions		
Detection principle	New ceramic catalytic method	New ceramic catalytic method
Sampling method	Diffusion sampling type	Diffusion sampling type
Measuring gas	Hydrogen(H ₂) in air	Hydrogen(H ₂) in air
Measuring range	0~20,000ppm or 0~40,000ppm (Specify either one of them when ordering) (Note 1)	0~20,000ppm or 0~40,000ppm (Specify either one of them when ordering) (Note 1)
Startup time	Output startup time : Within 500msec	Output startup time : Within 500msec
Environmetals		
Ambient temp	-35~ 100°C	-35~ 100°C
Ambient humidity	0~100%RH (Note 2)	0~100%RH (Note 2)
Storage temp	-40~125°C (Note 2)	-40~125°C (Note 2)
Pressure	70~130 kPa	70~130 kPa
Interference	No influence against HC, H ₂ S, N ₂ , CO, CO ₂ , NO _x in	No influence against HC, H ₂ S, N ₂ , CO, CO ₂ , NO _x in air
Safety		
Trouble output	Below DC 0.2V (Sensor disconnection trouble)	Below DC 0.2V (Sensor disconnection trouble)
Explosion-proof	To be no ignition source at over 4% H ₂ in air.	To be no ignition source at over 4% H ₂ in air.
Structure		
Dimensions	Approx 80 (W) × 55 (H) × 15 (D) (Except sensor, CNN part)	Approx 80 (W) × 55 (H) × 15 (D) (Except sensor, CNN part)
Weight	Approx 103g	Approx 103g
Water protection	Sensor part protected by hydrohobic filter	Sensor part protected by hydrohobic filter
Dust/drip-proof	Conforms to IP-67	Conforms to IP-67
Electricals		
Power input voltage	DC 8~16V(DC12V)	DC 8~16V(DC12V)
Power consumption	Max 0.5W/DC12V(when operated continuously)	Max 3.0W/DC12V(when operated continuously)
Signal output /gas concentration	DC 0.5~4.5V/0~F.S (Linear ouput).	DC 0.5~4.5V/0~F.S (Linear ouput).
Over scale	DC 4.5~4.6V	DC 4.5~4.6V
Acc connector(Male)	Sumitomo denso model 6188-0066 4-electrode (with harness 8 cm)	Sumitomo denso model 6188-0066 4-electrode (with harness 5 cm)
Reception connector(Female)	Option: Sumitomo denso model 6189-0126 4- electrode (With harness 3 m)	Option: Sumitomo denso model 6189-0126 4-electrode (With harness 3 m)
Reverse connection	Protection circuit provided	Protection circuit provided
EMC	EMI: ISO11452-2,-3,-4 under compliance EMS: CISPR25 under compliance ESD: ISO10605 under compliance	EMI: ISO11452-2,-3,-4 under compliance EMS: CISPR25 under compliance ESD: ISO10605 under compliance
Receiver demand		
Input impedance	Over 10kΩ	Over 10kΩ

Note 1: For special range spec, it is consulted separately.

Note 2: When condensed,

- The gas detection will be reduced condensation droplets are allowed to sit on this the sensor face.
- The startup time shall be longer or the life may be shorter at the inside of sensor chip at the storage time.

The specifications subject to change without notice.

RIKEN KEIKI Co., Ltd.